

A CONCEPT PAPER

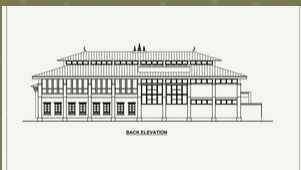
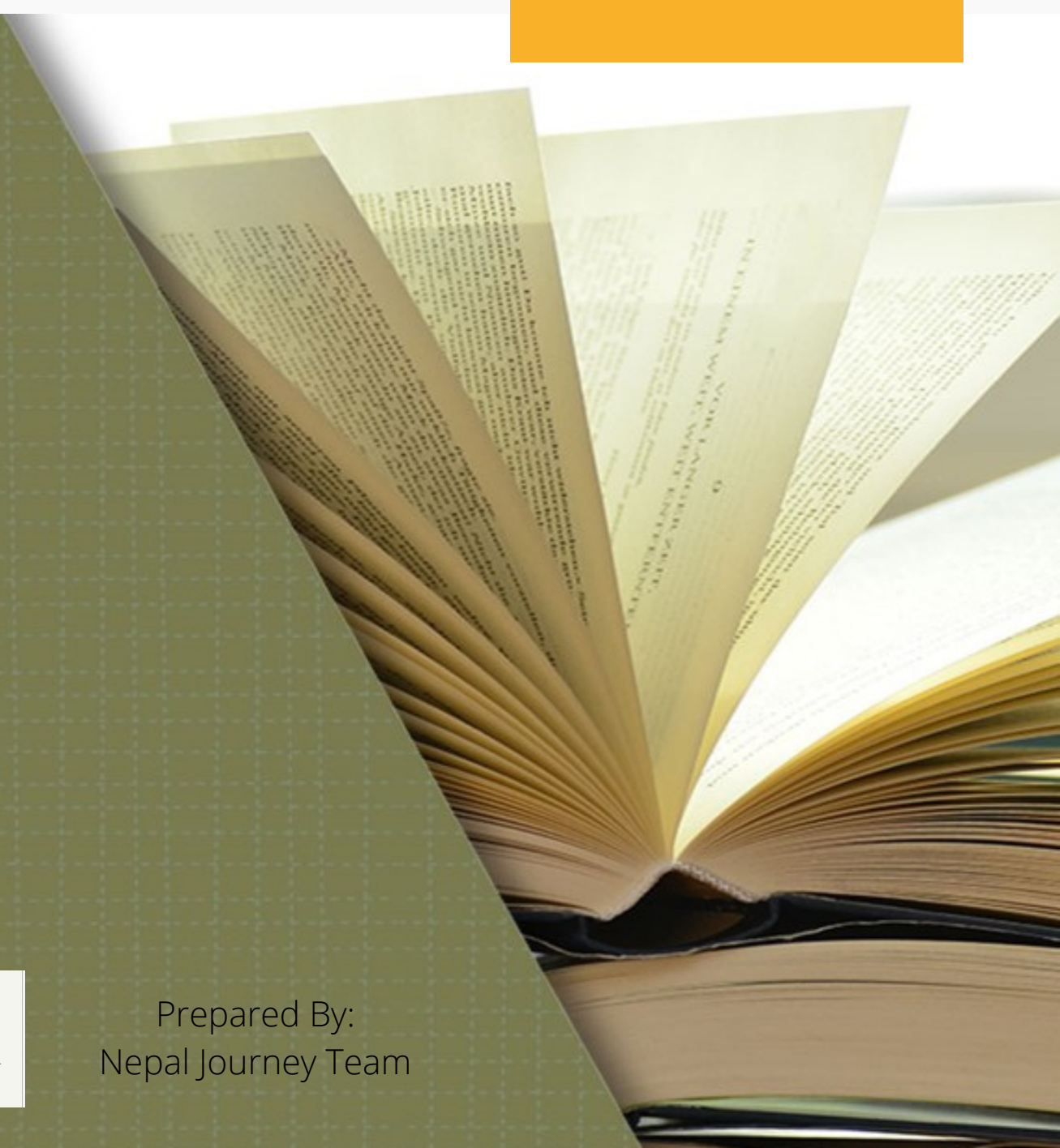
NEPAL JOURNEY LIBRARY

BHARATPUR-4, CHITWAN, NEPAL



EDUCATION

A JOURNEY TO EXCELLENCE



Prepared By:
Nepal Journey Team

Nepal Journey Library Project

Bharatpur Metropolitan City-4, Chitwan, Nepal

A Concept Paper

NEPAL JOURNEY - An Introduction

Nepal Journey is a non-profit charitable organization established in 2015 under Section 501(C) (3) of the United States Internal Revenue Code. Our Vision is to have a positive impact on the lives of underprivileged children and parents in Nepal by creating alliances with philanthropists, identifying those in need, and facilitating those connections. The objectives include providing scholarship programs for students, establishing libraries, and collaborating with local agencies to identify areas of needed intervention.

It is our firm conviction that when libraries are developed and their services are spread all over the country, they play major roles in eradicating illiteracy, making the public information literate and inculcating reading habits in them, thereby turning them into lifelong learners that will eventually assist in our government's Poverty Reduction Strategies (PRS) and Good Governance Programs.

Nepal Journey achieves its ideals for a better world through fundraising events, including gala dinners intended to raise money. We also seek charitable donations and sponsorships from a variety of companies. To date, the organization has been achieving this purpose through the establishment of five libraries and a scholarship program which covers the cost of tuition, books, materials, and uniforms for students.

PROJECT GOALS AND OBJECTIVES

Libraries are the gateway to lifelong learning, offering a full spectrum of materials, programs, and services to citizens. The purpose of this grant proposal is to remedy the current deficit in learning accessibility. The overall mission of our public libraries is to improve the quality of life of citizens by providing access to library services, materials, and programs that promote education and cultural enrichment. The ultimate goals of the Nepal Journey Disability Library are as follows:

- To improve the quality of life for children and adults in Nepal by enhancing literacy, comprehension, and access to educational materials for the disabled.
- To improve available opportunities for Nepali residents with disabilities and economic disadvantages to advance themselves through the educational system to eventually acquire jobs that previously could not be accessed.
- To provide quality educational materials including books, computers, and software, enabling those who use them to expand their skills and knowledge to advance in global environments while carrying forward the legacy and culture of Nepal.

Vision

Nepal Journey has a vision to make life better for under-privileged individuals by providing them with quality education, better health care, and facilitation of other needs. We aim to accomplish this by:

- Establishing/re-establishing at least one new library each year, keeping in views of those with disabilities by establishing a disability-accessible library which serves the needs of the blind, deaf, and physically disabled.

- Providing scholarship programs for students from economically disadvantaged backgrounds.
- Assisting community schools by providing needed furniture, sports equipment, and educational materials.

PROJECT DESCRIPTION

- Project Title : Nepal Journey Public Library Project
- Type of Project : Construction of disabled-friendly public library
- Project Proponents : Nepal Journey
- Number of Beneficiaries : Population of Chitwan Metro City and visitors from across the country.
- Project Beneficiaries : Population of the project area and other library users
- Location of Beneficiaries : Chitwan Metropolitan City
- Date of Implementation/Duration : Two years from date of inauguration
- Area of Project Implementation : Chitwan Metropolitan City - Ward Number 4
- Budget Requirement : In accordance to financial proposal

In the past, Nepal Journey has proven its commitment to service to the marginalized communities through its various projects. Its past projects include public libraries, scholarship programs, women empowerment programs, health camps, and awareness programs.

JUSTIFICATION FOR THE PROJECT

Unlike schools, which serve specific groups, public libraries serve as central locations, where people can glean a large amount of information concerning the budget, health, education, agriculture, transportation, and businesses that affect their livelihoods. People can form groups and generate ideas for the betterment of themselves and for the society they live in. This helps the government to create an informed citizenry who will conscientiously partake in the nation-building process that currently faces Nepal.

The purpose of this proposal is to create a library as one of our goals to spread education to underprivileged children. This proposal is to seek a grant in order to provide resources and services in several areas, dedicated primarily to meeting the needs of Nepali children for education, information, and personal development. Part of this mission can be achieved via the library.

Because of the poor economy in Nepal, accessibility to libraries, specifically for those with limited mobility due to special needs, are fundamental to the overall development of the society. Educational resources, such as books, can provide Nepali people with better access to information which can help them become more competitive in the global society. To improve the accessibility of information in the library, we hope to equip these facilities with Internet access and a greater collection of books. Training for staff to be able to set up the library properly is also essential to make them even more accessible.

Bharatpur, the largest city of Nepal after Kathmandu, is the administrative center of the Chitwan District. Chitwan is the commercial and service center of South Central Nepal and a major destination for higher education, health care, agriculture and tourism in the region. Chitwan is a major hub which connects national and international communities, so building a library in this region will benefit the local population as well as the larger domestic and international community, aiming to do their research and cross cultural studies.

IMPACTS/OUTCOMES

The Nepal Journey Library Project anticipates the following outcomes for users of the library:

- Eliminate barriers for the disabled accessing and using library facilities and services. The Nepal Journey Chitwan Library will uniquely be equipped for differently abled individuals with valuable resources.
- In order to provide equal access to those who are hearing impaired, the library will provide closed-caption critical titles for video collection, computer software, and appropriate technology for playing back captions. This can expand resources to include the deaf. The library will also offer equal access to those who are visually impaired by providing a full Braille system to assist with equipment, audio software, audiobook players, restrooms, training programs, and more.
- Achieve great articulation, awareness, and visibility of library services to students and visitors. The Nepal Journey Chitwan Library will also be readily available with sources of comprehensive information needed by people for personal, family, and job-related purposes. Our community's economy benefits when business people can also use the library's resources to make wise business decisions; employees can use it to improve job skills and to help lower the cycle of poverty.
- In addition, this project will also strive to benefit existing public and private libraries and staffs that are trained to setup their libraries, manage their libraries, and promote library use in the schools.

PARTNERS AND PROJECT IMPLEMENTER

NEPAL JOURNEY will work in close collaboration with all the concerned stakeholders of the project such as the donors, local government bodies, local construction committee(s), community people, school authorities, as well as other concerned civil societies.

ACTIVITIES FOR LIBRARY CONSTRUCTION

The building of the disability-friendly library will be constructed using the locally available materials and latest innovative technology like the elevator, double glazed glass, etc. Local material will be wooden frames, stones, mud mortar, etc.

RISK MANAGEMENT AND PLANNING

Effectively coordinating with relevant stakeholders and involving representatives of all the political parties and local community leaders will minimize the risk of failure. All library activities will be participatory and participatory group discussions will be held by Nepal Journey and civil society groups to understand issues and tackle any problems that may arise within the community where the library is located.

PROJECT ORGANIZATION/STAFFING:

The Program Director, Mausami Shrestha, the Global Finance Coordinator, Bhanu Kharel, along with other Library Project Coordinators, are tasked with overseeing the library construction process and ensuring that the project complies with the requirements of various disability support organizations.

ESTIMATED BUDGET/TIMEFRAME

We are seeking financial support amounting to 32,199,405.021 NPR to fund the construction of the Nepal Journey's disability-friendly library. This initiative is committed to build a library building that will function as an essential educational hub and community gathering place, fostering inclusivity and empowerment within marginalized communities in the region.

TIME FRAME

The construction of the library building is estimated to take two years. Once the building is ready, procurement of all resources and completion of all other necessary activities will be carried out before the library opens to the public.

GENDER INCLUSIVITY OF THE PROJECT

Nepal Journey Library will be based on the principle of equity and equality. Therefore, gender inclusivity among others will be a core to it. On the contrary, it will be a gender inclusive library space where children and adults, in spite of gender, sexual orientation and/or any other differences can peacefully participate in the learning environment.

SUSTAINABILITY OF THE PROJECT

Nepal Journey will emphasize local participation for creating local ownership and making the community accountable to ensure sustainability of the projects with engagement of all concerned stakeholders such as donors, the local government, beneficiaries, and the community. Moreover, indigenous resources and manpower will be used for constructing the buildings. Achieving sustainability is indispensable for the Nepal Journey Disability Friendly Library for the following reasons:

- To ensure that the project continues to benefit the beneficiaries even after the donor funding has stopped
- To expand the libraries further in terms of its programs and services
- To organize various educational and community-outreach programs targeting the people living with disabilities

A sense of ownership by the community members is one of the important factors that will contribute to the long-term sustainability of any project. Because only when the local community members have a sense of ownership of the project will they ensure that it not only continues to exist, but also grow and expand its services. Hence, during the construction phase, locally available resources will be encouraged and community will also be involved in the decision making with regard to various process of the construction of the library.

MONITORING AND EVALUATION

Ensuring that the libraries are meeting goals will require project evaluation. Surveys and personal interviews with library members will be used to evaluate community needs. The library seeks donor partnership with organizations and individuals in order to accomplish the various activities associated with the project. All activities of the program will be evaluated on a regular basis to ascertain whether they are achieving the objectives and the declared goals of the project according to the specified time frame. The following monitors will be employed to help the coordinator achieve this task:

- Feedback from beneficiaries
- Local Area Survey
- Interviews with local people and beneficiaries, social workers, DEO (District Education Officer), CDO (Chief District Officer), representatives of the Chitwan Metropolitan City, etc.